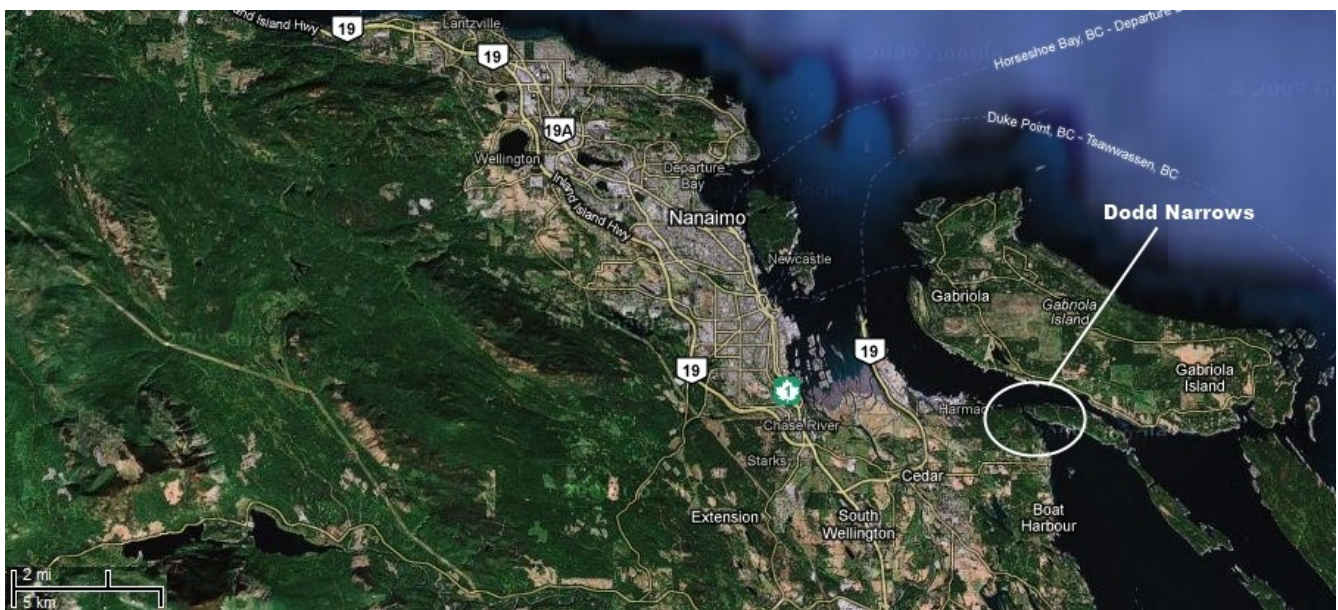
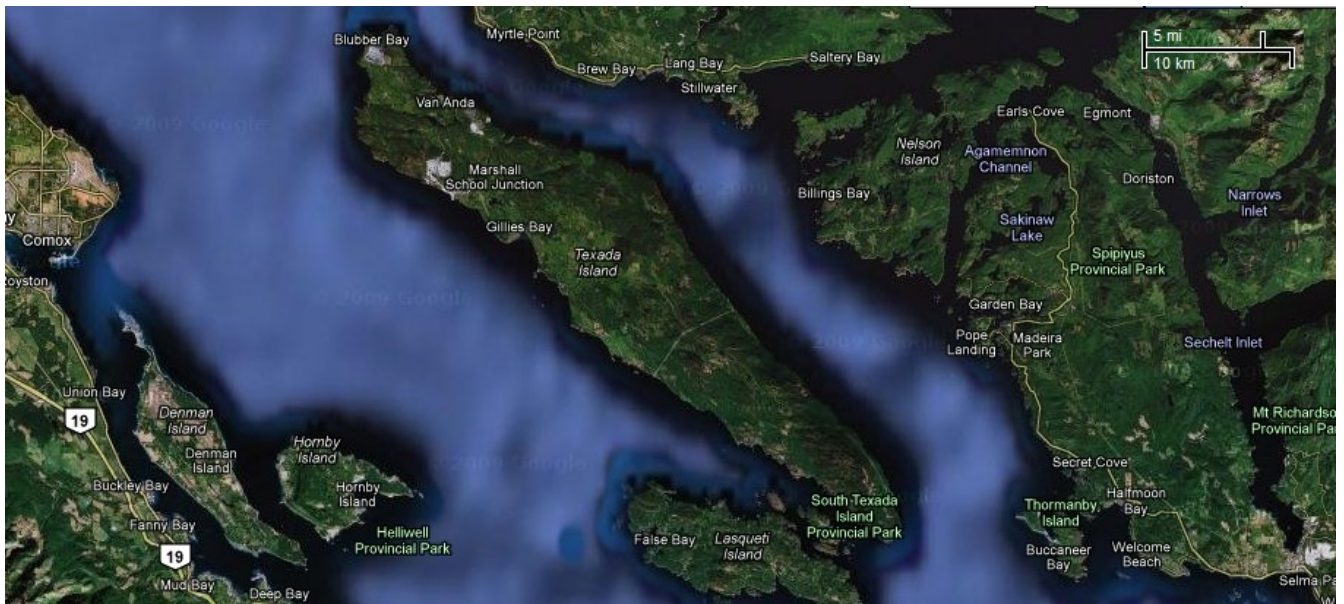


*Illustration 1: Southeast corner of Vancouver Island*

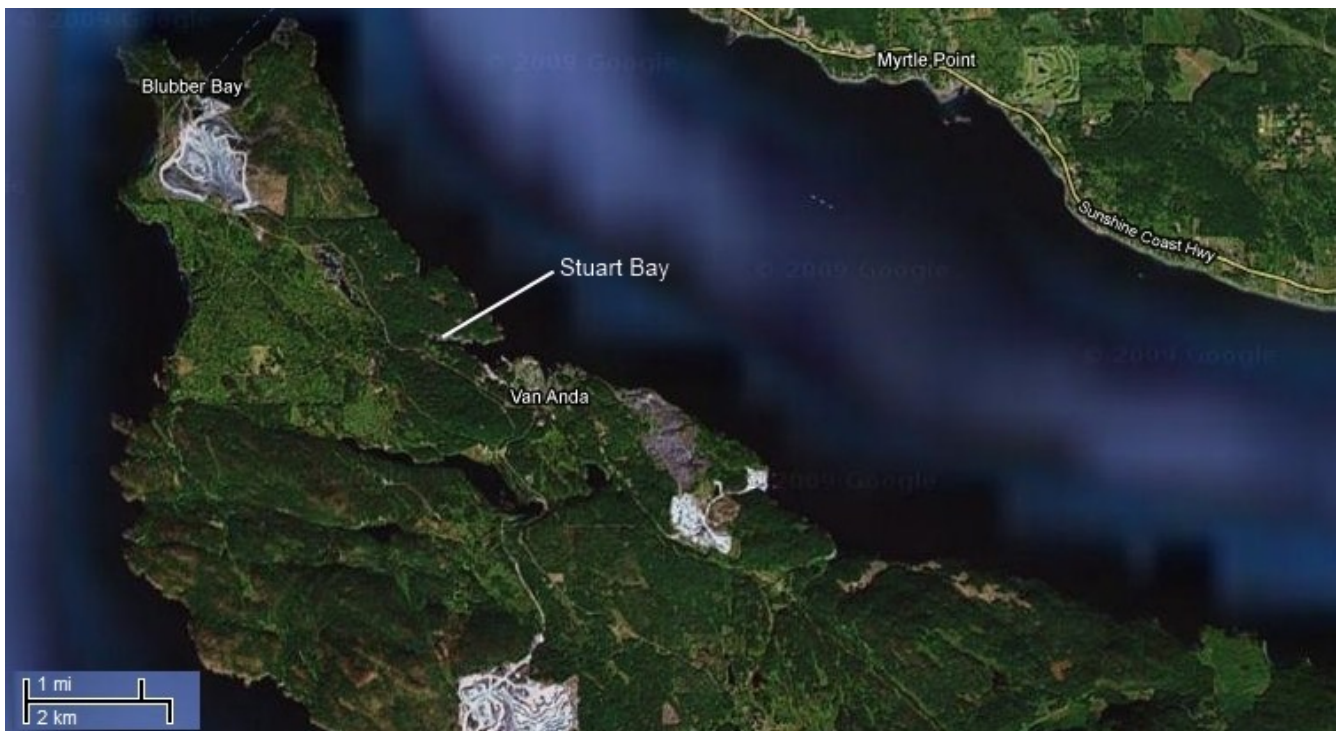


*Illustration 2: Nanaimo and vicinity including Dodd Narrows*





*Illustration 3: Taxada Island*



*Illustration 4: Northwest end of Taxada Island showing Stuart Bay*



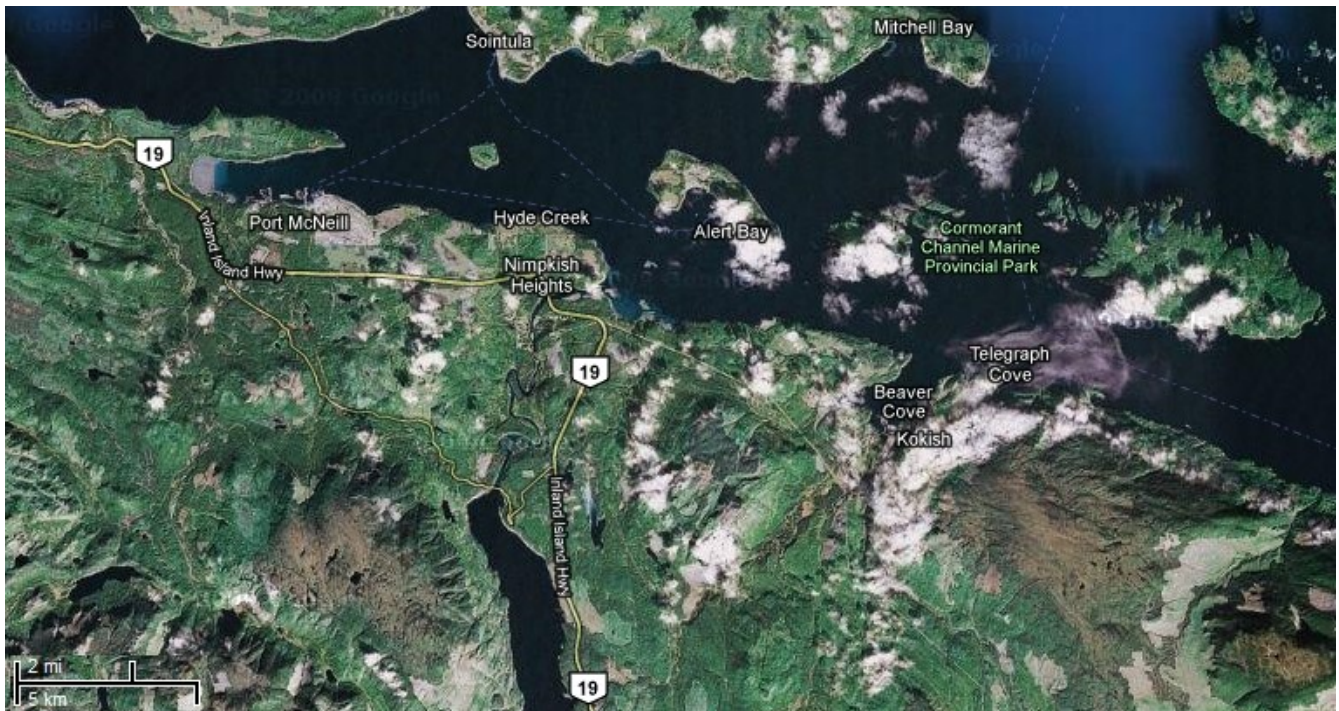


*Illustration 5: Desolation Sound*



*Illustration 6: Stuart Island and Big Bay*





*Illustration 7: Port McNeill*



*Illustration 8: Port Hardy*





*Illustration 9: Bull Harbour*



*Illustration 10: Cape Scott*





*Illustration 11: Sea Otter Cove*



*Illustration 12: Winter Harbour and Julian Cove*





*Illustration 13: Klaskish Basin*



*Illustration 14: Brooks Peninsula also showing Klaskish Basin in the upper portion*





*Illustration 15: The Bunsby island group*



*Illustration 16: Queens Cove and the inland passage around Nootka Island*





*Illustration 17: Queens Cove*



*Illustration 18: Town of Zeballos at the head of Zeballos Inlet*



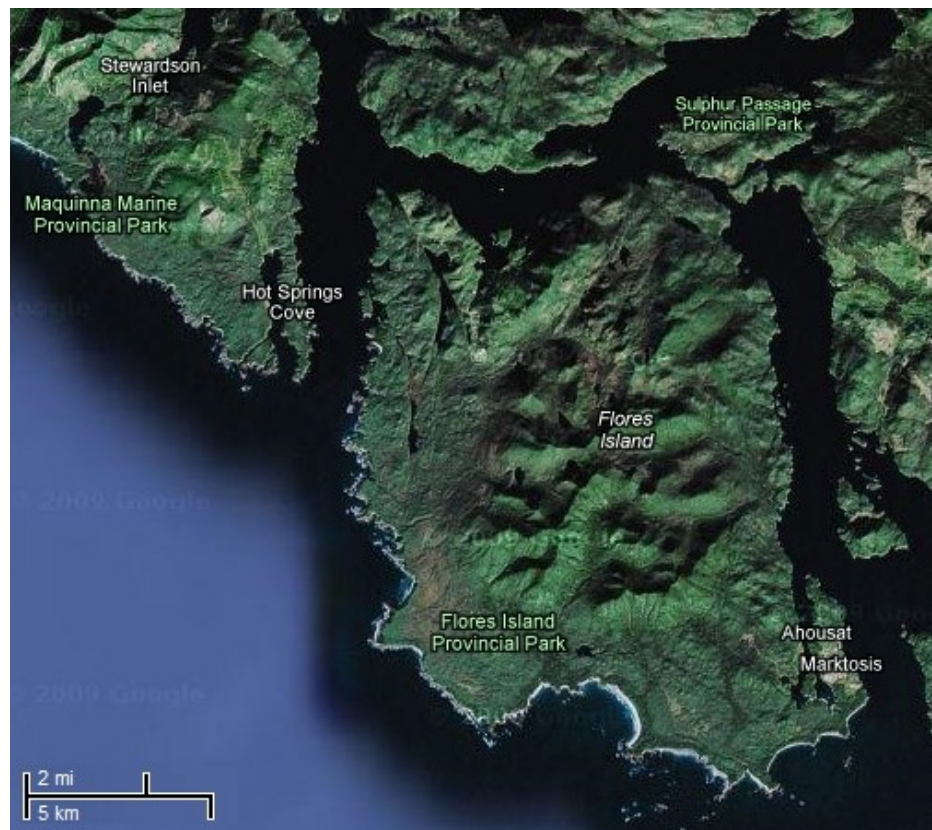


*Illustration 19: Friendly Cove*



*Illustration 20: Estevan Point and Hot Springs Cove*





*Illustration 21: Flores Island showing Hot Springs and Ahousat*



*Illustration 22: Hot Springs Cove*





*Illustration 23: Ahousat to Tofino*

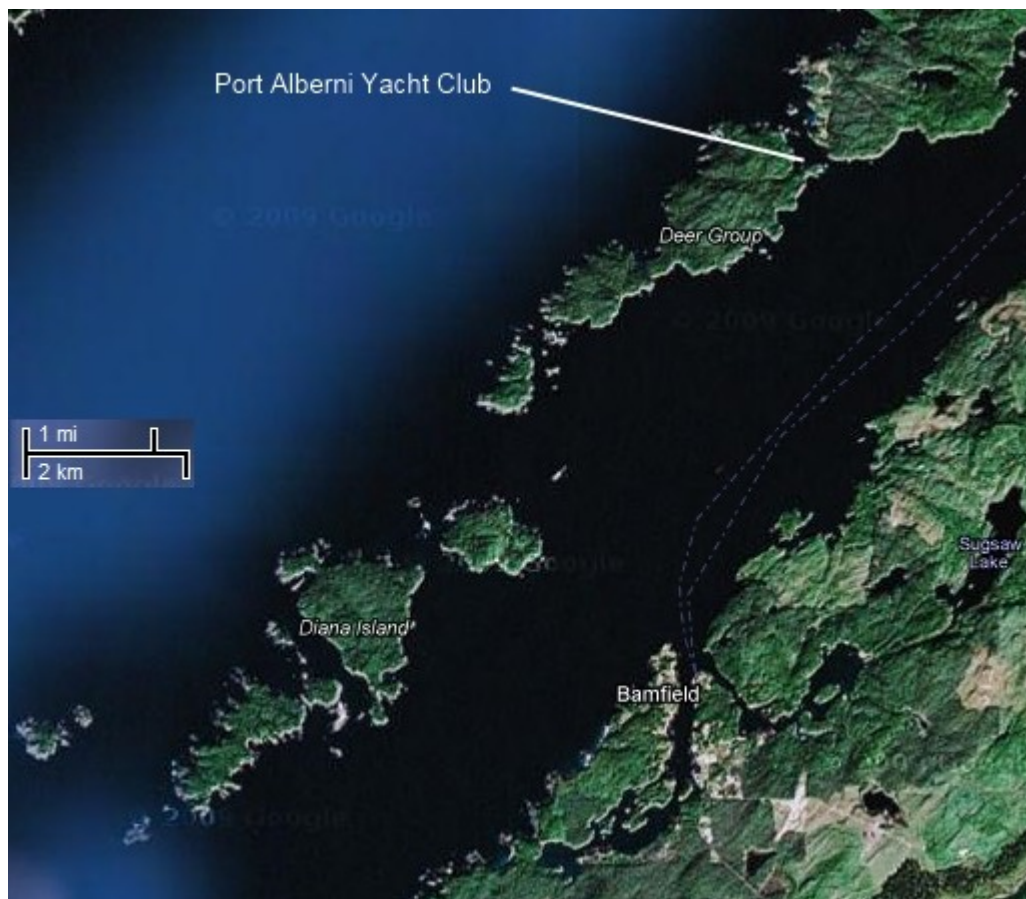


*Illustration 24: Tofino to Ucluelet*



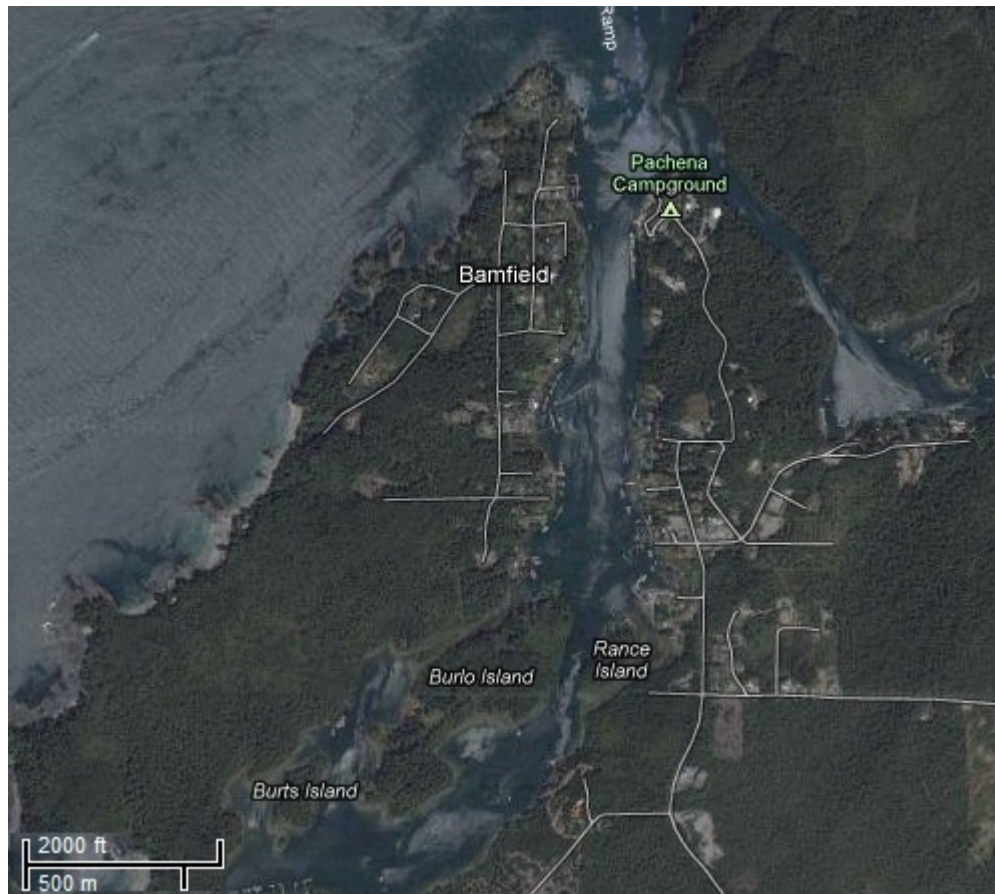


*Illustration 25: Ucluelet to Bamfield with the Broken Group islands*



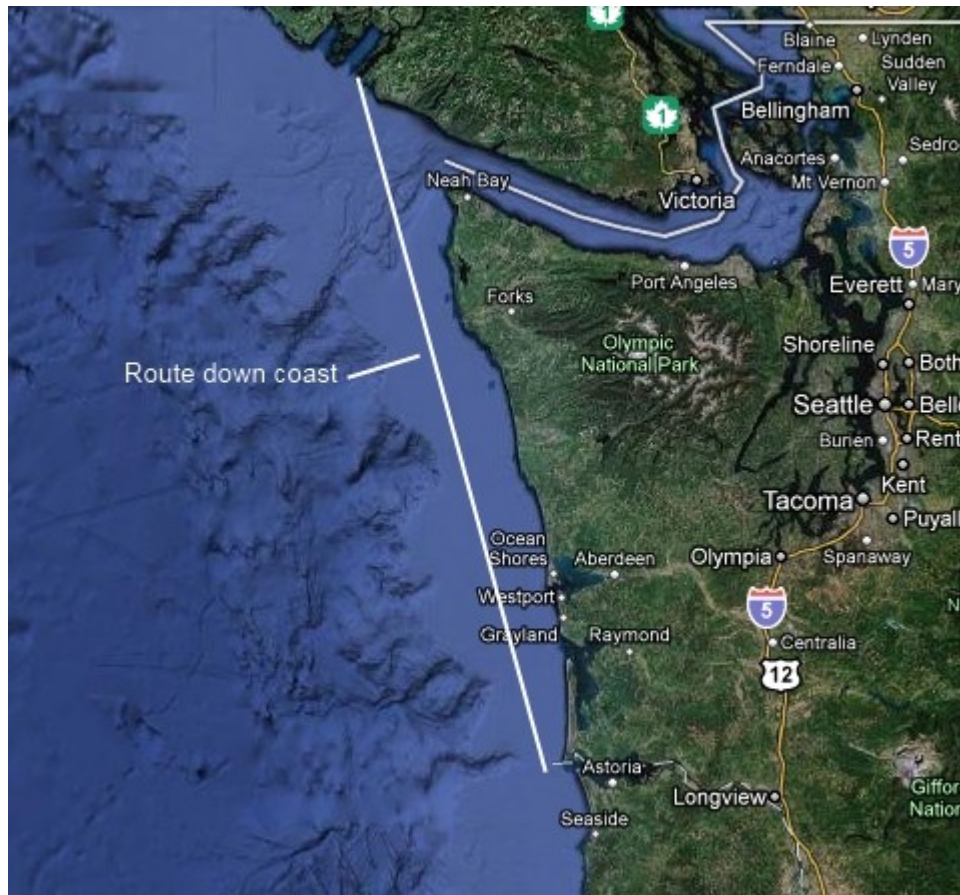
*Illustration 26: Port Alberni Yacht Club near Bamfield*



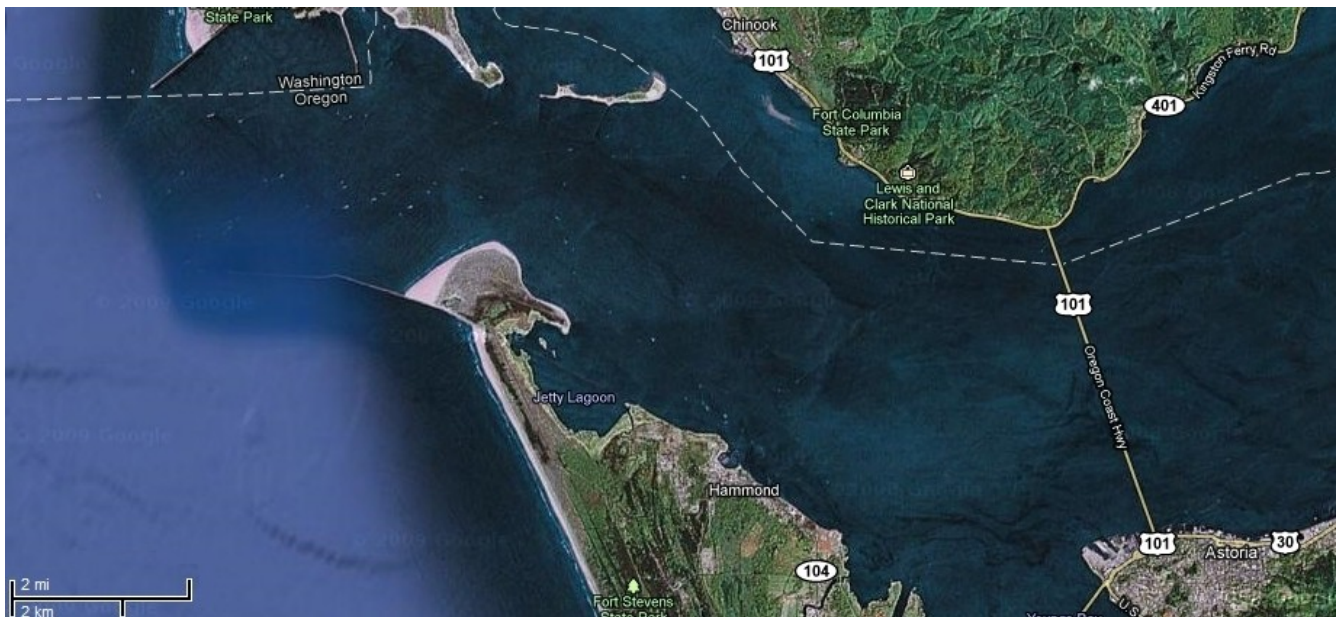


*Illustration 27: Bamfield*





*Illustration 28: The Washington Coast*



*Illustration 29: The entrance to the Columbia River*